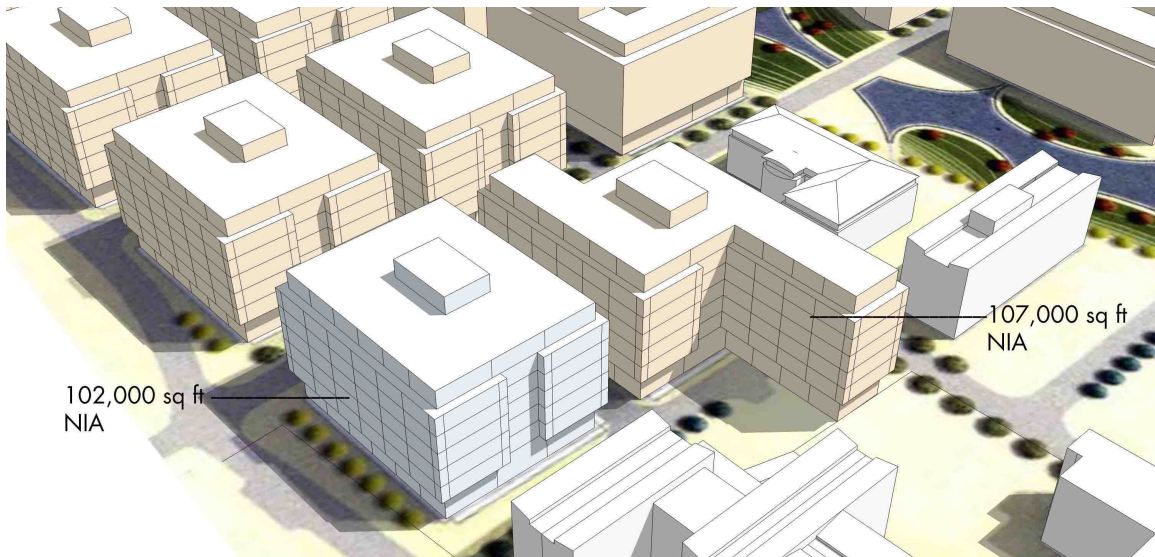


## E MIDLANDS REGENERATION

CLIENT:	EASTSIDE CITY
SECTOR:	COMMERCIAL/RETAIL
LOCATION:	EAST MIDLANDS
VALUE:	£20M
DATE:	2008-ONGOING



**This scheme involves the construction of two buildings of approximately 10,000m<sup>2</sup> each on a city centre brownfield site.**

We are currently working as part of a multi-disciplinary project team to deliver an innovative, cost effective design which will shortly proceed to a design and build tender.

The client's brief is for the building to achieve a BREEAM excellent rating while maintaining a highly competitive cost per square metre, both of which are seen as critical in attracting suitable tenants on a profitable basis, especially in the current economic climate.

The buildings are predominantly commercial

office space, with smaller areas of retail use and car parking on the lower levels.

We have developed a highly efficient structural solution using cellular steel beams supporting an insitu concrete slab on profiled metal decking. In consultation with the Services Engineer, a perforated ceiling system has been proposed to allow the slab soffits to be exposed to the circulation of air within the building and hence to exploit their thermal mass to the full in minimising the energy requirements of the development.

**In summary, this is an exciting project requiring exacting standards of technical and managerial input.**